



2022

PROJECT SUPPORT

NIEUWESLUIS TERNEUZEN

STARKON PROJECT SUPPORT

THE CHALLENGE

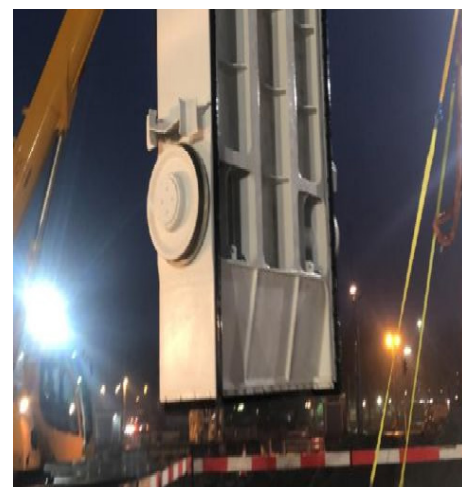
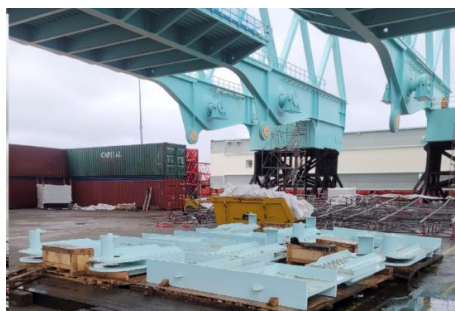
STARKON had the privilege to contribute to the Nieuwesluis project in Terneuzen for our clients Sassevaart and Hollandia BV. The contractor consortium Sassevaart consists of BAM Infra, Stadsbader Contractors, DEME (DEME Infra Marine Contractors B.V. and Dredging International N.V.), Belgian construction company Van Laere N.V., and Equans. The Nieuwe Sluis project aims to improve access and ensure smoother traffic flow from the Western Scheldt to the Ghent-Terneuzen Canal and beyond. We are proud to have played our part in this significant endeavor.

THE SOLUTION

The Nieuwe Sluis is designed to be as large as the locks in the Panama Canal, measuring 427 meters in length, 55 meters in width, and 16.44 meters in depth. The lock is expected to accommodate large seagoing vessels up to 366 meters long, 49 meters wide, and 15 meters deep. Starkon was approached to provide technical technicians for various disciplines and offer support with tool supplies when needed. We gladly handled ad hoc orders for parts without hesitation, ensuring smooth operations and timely assistance.

THE RESULT

There was excellent collaboration with both our clients and other contractors involved in the project, resulting in not only a pleasant working relationship but also the successful completion of a remarkable project for our client. We take pride in having been part of this endeavour, and it is one that we will proudly recount to our grandchildren in the future.



<https://starkon.nl/project/nieuwesluis-terneuzen>

STARKON BV

Nijverheidsweg 22 | 3251 LP Stellendam | The Netherlands | +31 (0)187 665 122 | info@starkon.nl | www.starkon.nl