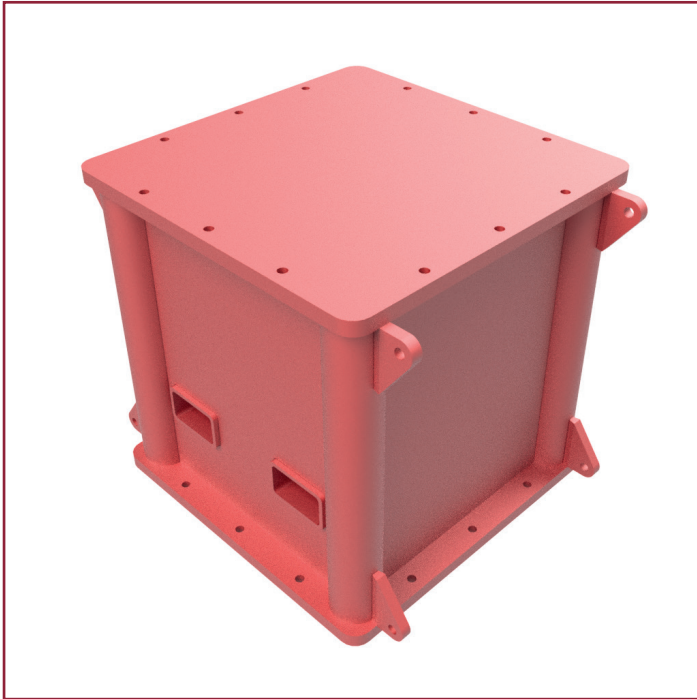


SUPPORT STOOL



We have steel support boxes. They are used to distribute the weight of a load over a given area on a certain height to avoid exceeding designed stresses.

Specifications

- Multiple heights From 0.3 meters up to 1 meter (standard)
- Custom heights and loads are possible on request.

Modular assembly

- Stools can be stacked to various heights with the use of a modular assembly.
- Easy connection with provided bolts.
- Support stools can be supported by bracings provided as a standard design on request.

Central certificated lifting point

- The safe working load limit of six times the weight of the stool.

Calculations

- All supports have a safety factor of 2 compared to the nominal workload.
- The standard working load limit is 350 tons.
- We can supply stooing with an even higher working load



STARKON QUALITY STANDARDS

Certifications

We provide an annual inspection of our rental fleet at least every three months and after each job. It includes inspection of wall thickness, and inspection for deformation, weld failure or other deviations. The scope of the inspection will depend on the type of product.

Inspections

All our products are provided with CE certification according to European Standards. If required, we can meet standards other than NEN standards, such as ISO or DNV approved standards.

<https://starkon.nl/product/support-stool>

STARKON BV

Nijverheidsweg 22 | 3251 LP Stellendam | The Netherlands | +31 (0)187 665 122 | info@starkon.nl | www.starkon.nl